



**India Meteorological Department
(Ministry of Earth Sciences)**

BULLETIN Number: 09 (BOB/03/2021)

TIME OF ISSUE: 1200 HOURS IST

DATED: 14.09.2021

FROM: INDIA METEOROLOGICAL DEPARTMENT (FAX NO. 24643965/24699216/24623220)

**TO: CONTROL ROOM, NDM, MINISTRY OF HOME AFFAIRS (FAX.NO. 23093750)
CONTROL ROOM NDMA (FAX.NO. 26701729)
CABINET SECRETARIAT (FAX.NO.23012284, 23018638)
PS TO HON'BLE MINISTER FOR S & T AND EARTH SCIENCES (FAX NO.23316745)
SECRETARY, MOES, (FAX NO. 24629777)
H.Q. (INTEGRATED DEFENCE STAFF AND CDS) (FAX NO. 23005137/23005147)
DIRECTOR GENERAL, DOORDARSHAN (23385843)
DIRECTOR GENERAL, AIR (23421105, 23421219)
PIB MOES (FAX NO. 23389042)
UNI (FAX NO. 23355841)
D.G. NATIONAL DISASTER RESPONSE FORCE (NDRF) (FAX NO. 26105912, 2436 3260)
DIRECTOR, PUNCTUALITY, INDIAN RAILWAYS (FAX NO. 23388503)
CHIEF SECRETARY, GOVT. OF ODISHA (FAX NO. 0674 -2536660)
CHIEF SECRETARY, GOVT. OF WEST BENGAL (FAX NO. 033-22144328)
CHIEF SECRETARY, ANDAMAN & NICOBAR ISLANDS (FAX NO. 03192- 232656)
CHIEF SECRETARY, ANDHRA PRADESH (FAX NO. 0863-2441029, 08645-246600)
CHIEF SECRETARY, JHARKHAND (FAX NO. 0651-2400255)
CHIEF SECRETARY, TELANGANA (FAX NO. 040-23453700)
CHIEF SECRETARY, CHATTISGARH (FAX NO 0771-2221206)
CHIEF SECRETARY, GOA (FAX NO. 0832-2415201)
CHIEF SECRETARY, MAHARASHTRA (FAX NO. FAX NO. 022- 22028594)
CHIEF SECRETARY, GUJARAT (FAX NO. 079-23250305)
CHIEF SECRETARY, MADHYA PRADESH (FAX NO. 0755-2441076)
CHIEF SECRETARY, RAJASTHAN (FAX NO. 141 2227114)
CHIEF SECRETARY, UTTAR PRADESH (FAX NO. 0522 2239283)
CHIEF SECRETARY, HARYANA (FAX NO. 0172 2740317)**

Sub: Deep Depression weakened into a depression over north Chhattisgarh & adjoining north interior Odisha

The Deep Depression over north interior Odisha moved further west-northwestwards during past 6 hours with a speed of 21 kmph, weakened into a Depression and lay centred at 0830 hrs IST of today, the 14th September, 2021, over north Chhattisgarh & adjoining north interior Odisha, near latitude 22.1°N and longitude 83.4°E, about 80 km west-northwest of Jharsiguda (Odisha) and about 120 km south-southeast of Ambikapur (Chhattisgarh).

It is very likely to continue to move west-northwestwards across north Chhattisgarh & Madhya Pradesh and weaken into a well marked low pressure area during the next 48 hours.

Warnings:

(i) Rainfall

- **14th September:** Light to moderate rainfall at most places: with heavy to very heavy rainfall & extremely heavy falls at isolated places likely over Chhattisgarh & east Madhya Pradesh,

heavy to very heavy rainfall at isolated places likely over interior Odisha, south Gujarat Region, Saurashtra, north Konkan, north Madhya Maharashtra and heavy rainfall at isolated places over Vidarbha, Jharkhand, Gangetic West Bengal, east Uttar Pradesh and East Rajasthan,.

- **15th September:** Light to moderate rainfall at most places: with heavy to very heavy & extremely heavy falls at isolated places very likely over Gujarat State & Madhya Pradesh; heavy to very heavy rainfall at isolated places over north Konkan and heavy rainfall at isolated places over Chhattisgarh, east Uttar Pradesh and East Rajasthan.
- **16th September:** Light to moderate rainfall at most places: with heavy to very heavy rainfall at isolated places very likely over Gujarat State, east Rajasthan and west Madhya Pradesh, and heavy rainfall at isolated places very likely over east Uttar Pradesh, Haryana, Chandigarh & Delhi, west Madhya Pradesh, east Rajasthan and north Konkan.

(ii) EXPECTED IMPACT & ACTION SUGGESTED: Due to very Heavy/Extremely heavy Rainfall over Gujarat state, Chhattisgarh, Madhya Pradesh & east Rajasthan.

A. Impact Expected

- Localized Flooding of roads, inundation and water logging in low lying areas and closure of underpasses mainly in urban areas of the above region.
- Occasional reduction in visibility due to heavy rainfall.
- Disruption of traffic in major cities due to water logging in roads leading to increased travel time.
- Minor damage to kutcha roads. Possibilities of damage to vulnerable structure.
- Localized Landslides/Mudslides
- Damage to horticulture and standing crops in some areas due to inundation and strong winds.
- It may lead to riverine flooding in some river catchments (for riverine flooding please visit Web page of Central Water Commission)

B. Action Suggested

- Check for traffic congestion on your route before leaving for your destination.
- Follow any traffic advisories that are issued in this regard.
- Avoid going to areas that face the water logging problems often.
- Avoid staying in vulnerable structure.
- Follow IMD warnings for updates

Realised rainfall

Accumulated realised rainfall over Odisha, Chattisgarh and Gujarat (cm) during past 24 hours (0830 hours IST of 13th to 0830 hours IST of 14th Sep., 2021) is given in **Annexure**.

The next bulletin will be issued at 1430 hrs IST of 14th September, 2021.

(Sunitha Devi)
Scientist-F, RSMC, New Delhi

Copy to: ACWC Kolkata/ Chennai/Mumbai CWC Bhubaneswar/CWC Visakhapatnam/CWC Ahmedabad/ MC Ranchi/MC Hyderabad/MC Raipur/MC Goa/MC Bhopal

<p>LEGEND: Heavy Rainfall: 64.5 to 115.5mm, Very Heavy Rainfall: 115.6 to 204.4mm, Extremely Heavy Rainfall: 204.5mm or more. Many Places: 51% to 75% of the stations, Most Places: more than 76% of total stations, Isolated Places: Less than 25% of total stations</p>



OBSERVED AND FORECAST TRACK OF DEPRESSION OVER NORTH CHHATTISGARH AND ADJOINING NORTH INTERIOR ODISHA BASED ON 0300 UTC OF 14TH SEPTEMBER, 2021



DATE/TIME IN UTC
 IST=UTC + 0530
 L: LOW PRESSURE AREA
 WML: WELL MARKED LOW PRESSURE AREA
 D: DEPRESSION (17-27 KT)
 DD: DEEP DEPRESSION (28-33 KT)
 CS: CYCLONIC STORM (34-47 KT)
 SCS: SEVERE CYCLONIC STORM (48-63KT)
 VSCS: VERY SEVERE CYCLONIC STORM (64-89 KT)
 ESCS: EXTREMELY SEVERE CYCLONIC STORM (90-119 KT)
 SuCS: SUPER CYCLONIC STORM (≥20 KT)

- LESS THAN 34 KT
- 34-47 KT
- ≥ 48 KT
- OBSERVED TRACK
- FORECAST TRACK
- CONE OF UNCERTAINTY

SAT : INSAT-3D IMG

14-09-2021/(0430 to 0457) GMT

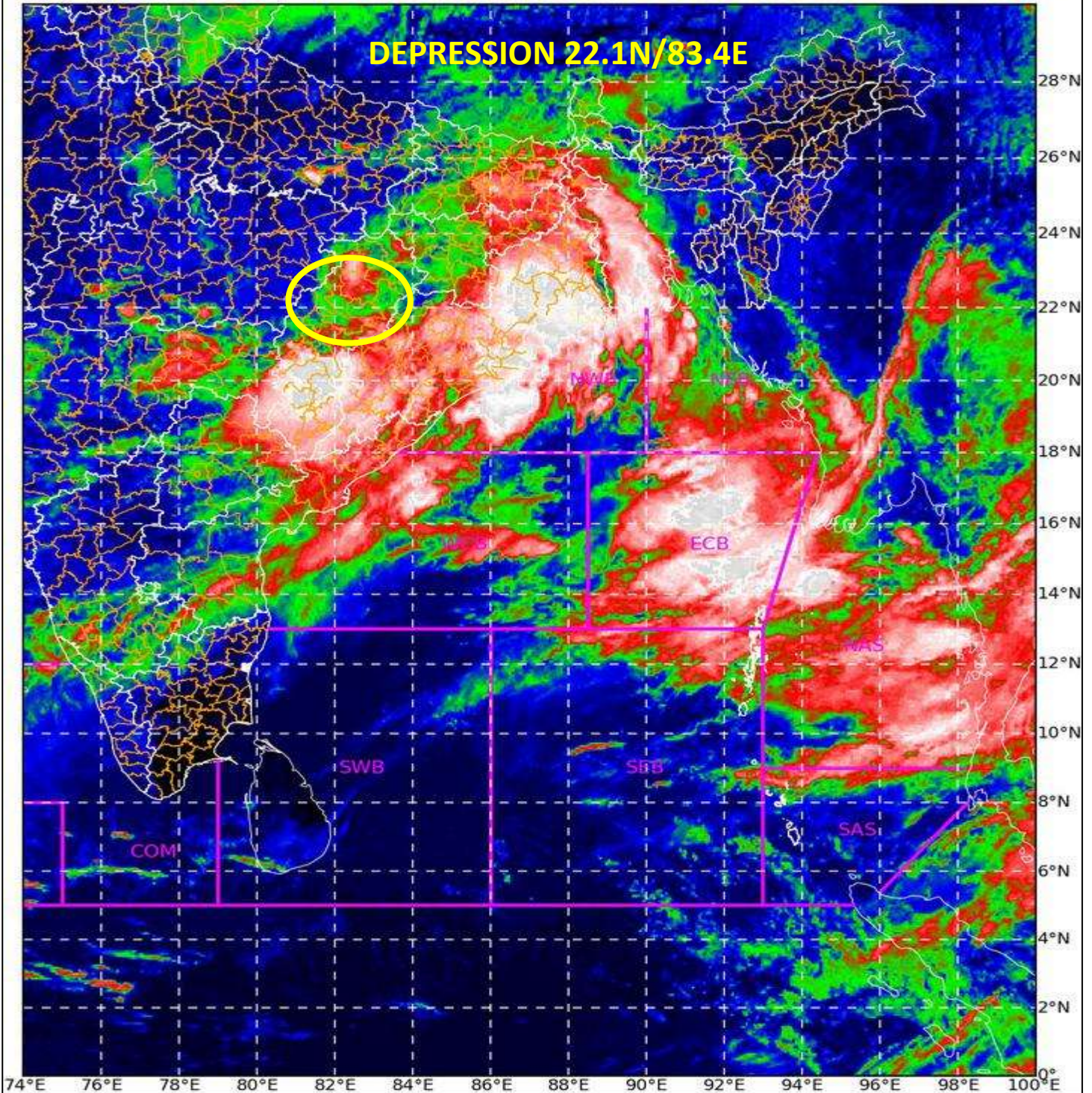
IMG_TIR1_TEMP 10.8 um

14-09-2021/(1000 to 1027) IST

L1C Mercator



DEPRESSION 22.1N/83.4E

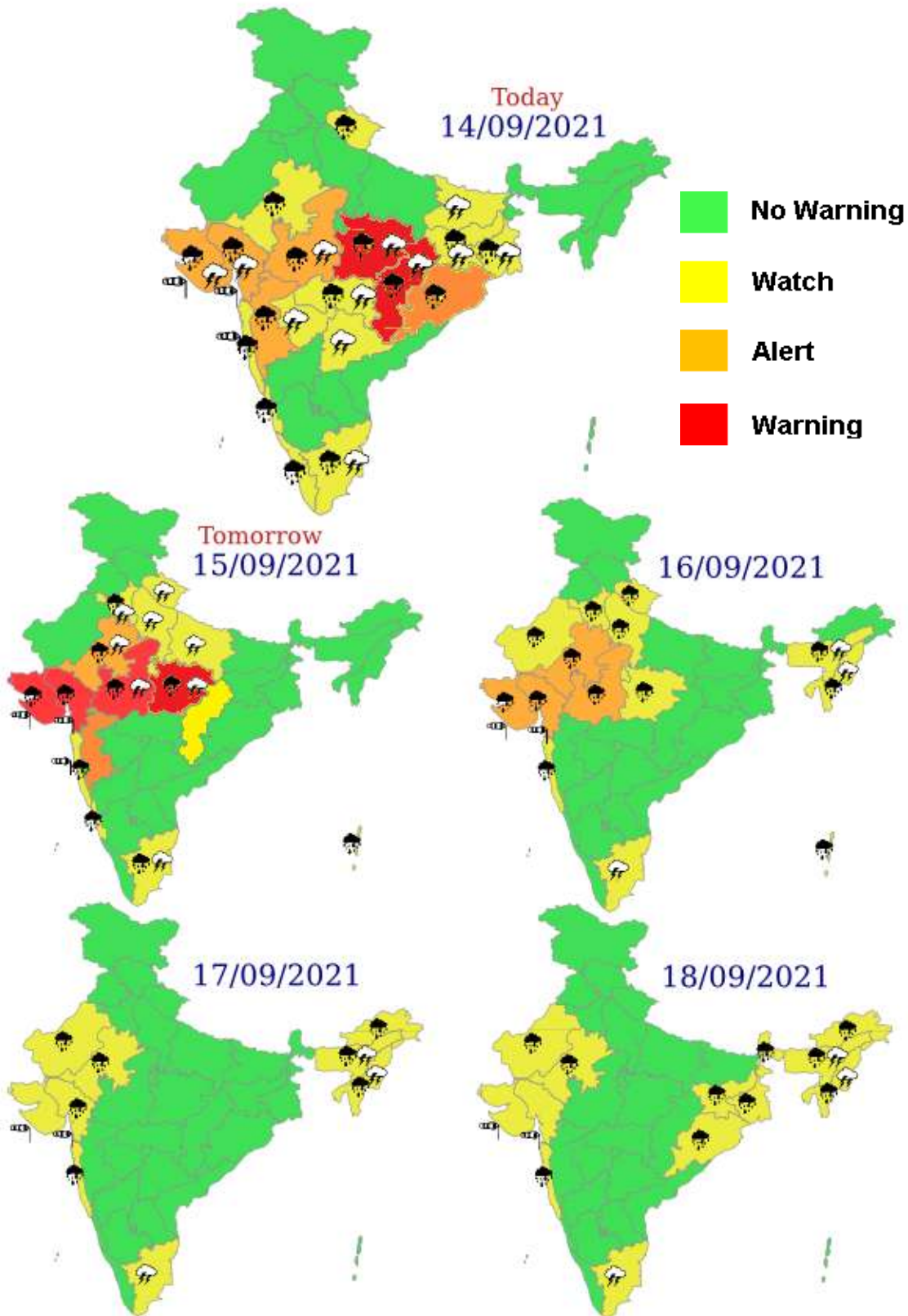


0 -20 -50

Celsius

IMD, DELHI

10 -10 -30 -70



Accumulated realised rainfall over Odisha, Chattisgarh and Gujarat (cm) during past 24 hours (0830 hours IST of 13th to 0830 hours IST of 14th Sep., 2021)

Odisha

Talcher (Angul) 39, Birmaharajpur (Sonepur) 37, Tikarpara (Angul) 35, Sonepur (Sonepur) 28, Boudhgarh (Boudhgarh) 26, Patnagarh (Bolangir) 25, Banarpal (Angul) 25, Bolangir (Bolangir) 24, Hindol (Dhenkanal) 24, Paikmal (Bargarh) 24, Kantamal (Boudhgarh) 23, Parjang (Dhenkanal) 23, Barmul (Nayagarh) 22, Belpada (Bolangir) 22, Bari (Jajpur) 21, Jenapur (Jajpur) 21, Phiringia (Kandhamal) 21, Gaisilet (Bargarh) 21, Mahanga (Cuttack) 21, Angul (Angul) 20, Nawapara (Nawapara) 20, Kamakhyanagar (Dhenkanal) 20, Tarva (Sonepur) 20, Athmalik (Angul) 20, Altuma (Dhenkanal) 19, Harabhanga (Boudhgarh) 19, Banki (Cuttack) 19, Gania (Nayagarh) 19, Narsinghpur (Cuttack) 19, Rajkishorenagar (Angul) 18, Phulbani (Kandhamal) 18, Kankadahad (Dhenkanal) 18, Agalpur (Bolangir) 18, Jharbandh (Bargarh) 17, Binjharpur (Jajpur) 17, Bhuban (Dhenkanal) 17, Dhenkanal (Dhenkanal) 17, Daitari (Keonjhar) 16, Athgarh (Cuttack) 16, Khairamal (Boudhgarh) 16, Rajghat (Balasore) 16, Chandikhol (Jajpur) 16, Khaprakhol (Bolangir) 16, Padampur (Bargarh) 16, Ullunda (Sonepur) 15, Salebhatta (Bolangir) 15, Sukinda (Jajpur) 14, Danagadi (Jajpur) 14, Tikabali (Kandhamal) 14, Balasore (Balasore) 13, Telkoi (Keonjhar) 13, Komna (Nawapara) 13, Tigiria (Cuttack) 13, Salepur (Cuttack) 13, Naraj (Cuttack) 13, Dunguripalli (Sonepur) 12, Daspalla (Nayagarh) 12, Cuttack (Cuttack) 12, Jaleswar (Balasore) 11, Korei (Jajpur) 11, Loisingha (Bolangir) 11, Jajpur (Jajpur) 11, Rairakhol (Sambalpur) 11, Rengali (Angul) 10, Turekela (Bolangir) 10, Saintala (Bolangir) 10, Barpalli (Bargarh) 9, Madanpur Rampur (Kalahandi) 9, Jagannath Prasad (Ganjam) 9, Karlamunda (Kalahandi) 9, Harichandanpur (Keonjhar) 9, Burla (Sambalpur) 9, Baliguda (Kandhamal) 9, Chendipada (Angul) 9, Kaniha (Angul) 9, Atabira (Bargarh) 9, K Nuagaon (Kandhamal) 9, Kotagarh (Kandhamal) 9, Chandbali (Bhadrak) 8, Bhadrak (Bhadrak) 8, Akhuapada (Bhadrak) 8, Nh5 Gobindpur (Balasore) 8, Kalinga (Kandhamal) 8, Pallahara (Angul) 8, Kujanga (Jagatsinghpur) 8, Rajkanika (Kendrapara) 8, Raikia (Kandhamal) 8, G Udayagiri (Kandhamal) 8, Bargarh (Bargarh) 8, Similiguda (Koraput) 8, Daringibadi (Kandhamal) 8, Bonth (Bhadrak) 8, Batli (Bargarh) 8, Mundali (Cuttack) 8, Dhamnagar (Bhadrak) 8, Jujumura (Sambalpur) 8, Bhograi (Balasore) 7, Nawana (Mayurbhanj) 7, Anandpur (Keonjhar) 7, Belaguntha (Ganjam) 7, Khandapara (Nayagarh) 7, Bijepur (Bargarh) 7, Niali (Cuttack) 7, Kaptipada (Mayurbhanj) 7, Narla (Kalahandi) 7, Bhanjnagar (Ganjam) 7, Nischintakoili (Cuttack) 7, Belgaon (Bolangir) 7, Betanati (Mayurbhanj) 7

Gujarat Region:

Kaprada 19, Dharampur 17, Waghai 14, Valsad 13, Valsadkvikaws 12, Dholera 11, Umergam 11, Dangs 11, Vansda 10, Quant 9, Uchchhal 9, Khergam 9, Surat City 8, Subir 8, Daman_arg 8, Chhota Udepur 8, Mangrol 7, Pardi 7, Surat 7

Saurashtra & Kutch:

Lodhika 52, Visavadar 47, Kalavad 41, Dhoraji 25, Targhadia 24, Junagadh 21, Kotdasangani 21, Rajkot 20, Junagarh 20, Keshod 20, Gondal 19, Jamkandorna 19, Paddhari 18, Ranavav 16, Talala 15, Mendarda 15, Porbandar 14, Malia 13, Vanthali 12, Jamnagar 12, Jamjodhpur 12, Upleta 12, Dhrol 11, Manavadar 11, Vadia 11, Bhesan 11, Lalpur 10, Kutiana 10, Bhanvad 10, Kalyanpur 10, Jetpur 9, Tankara 9, Jamnagarkvikaws 9, Una 8, Veraval 8, Diu (dist Diu) 8, Gir Gadhada 7, Dwarka 7

Chhattisgarh:

Gariabund-20, Basana-19, Magarlod, Bagbahara & Chhura-14 each, Kurud-13, Rajim, Mahasamund & Saraipali-11 each, Raipur & Labhandih-10 each, Patan-9, Arang & Mana-raipur, Kartala & Abhanpur 8 each, Sakti, Bilaigarh, Saja & Gandai-7 each
